

Wolle Daisy | Lana Daisy | Daisy wool | Laine Daisy

65% Wolle | lana | wool | laine, 27% Polyacryl | poliacrilico | polyacrylic | polyacrylique, 8% Alpaka | alpaca | alpaca | alpaga

101960-.. 50g~80m VE 1Kg



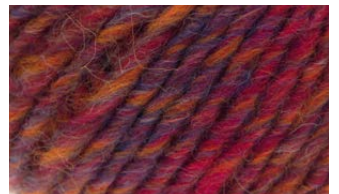
11
braun/rosa-Mix | marrone/rosa mix | brown/pink mix | mélange marron/rose



16
grau/anthrazit | grigio/anthracite | gray/anthracite | gris/anthracite



35
braun | marrone | brown | brun



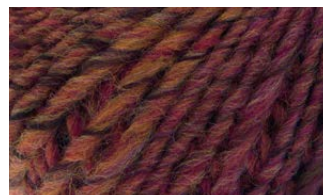
50
Mix orange | arancione mix | orange mix | mélange d'orange



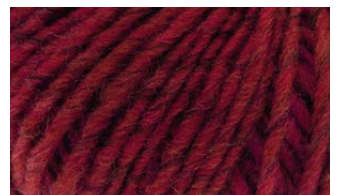
52
blau/grau | blu/grigio | blue/gray | bleu/gris



54
grün/blau/gelb/pink | verde/blu/giallo/rosa | green/blue/yellow/pink | vert/bleu/jaune/rose



56
Mix rost | ruggine mix | rust mix | mélange de rouille



60
Mix rot | rosso mix | red mix | mélange rouge



61
Miz hellgrau | grigio chiaro mix | light gray mix | mélange gris clair



64
Mix grau braun | grigio marrone mix | gray brown mix | mélange gris brun



65
grün/blau/braun | verde/blu/marrone | green/blue/brown | vert/bleu/brun