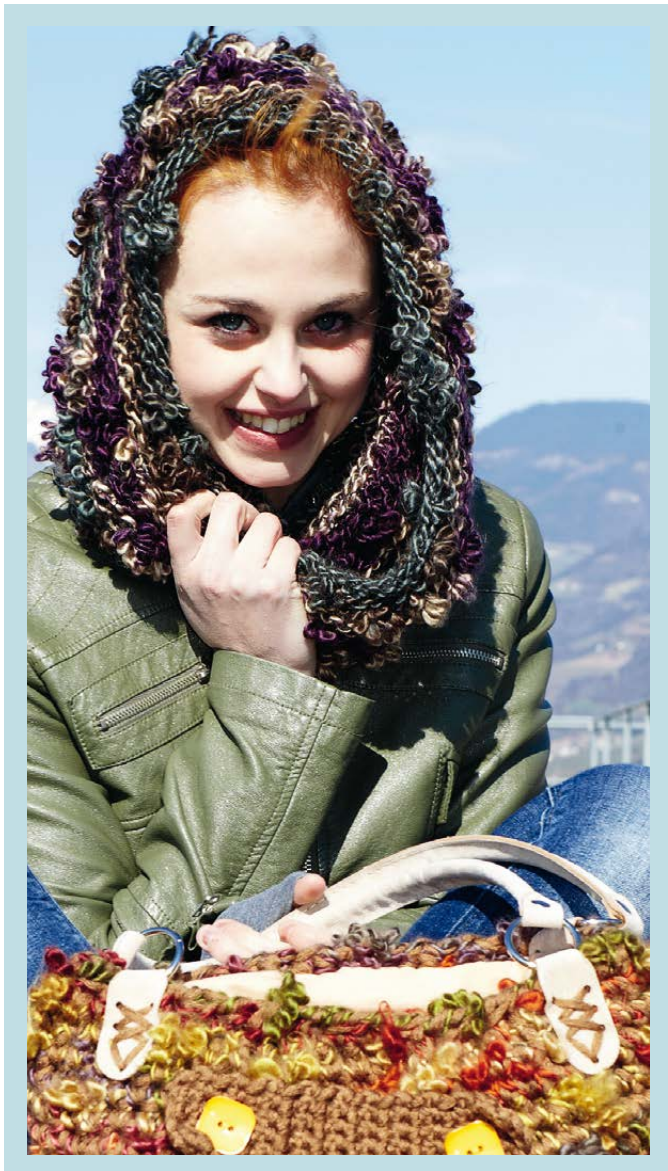


**Wolle Fleurs** | Lana Fleurs | Fleurs wool | Laine Fleurs  
 60% Polyacryl | poliacrilico | polyacrylic | polyacrylique,  
 35% Polyester | poliestere | polyester | polyester, 5% Wolle | lana | wool | laine

108037... 50g~35m VE 1Kg



**3**  
 lila/beige/braun | viola/beige/marrone |  
 purple/beige/brown | violet/beige/brun



**6**  
 braun/kiwi/dunkelgrün |  
 marrone/kiwi/verde scuro |  
 brown/kiwi/dark green |  
 marron/kiwi/vert foncé



**8**  
 beige/mittel/dunkelbraun |  
 beige/marrone medio/scuro |  
 beige/medium/dark brown |  
 beige/moyen/brun foncé



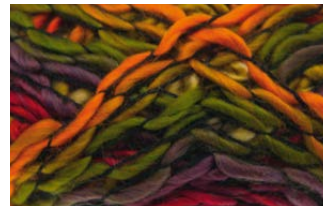
**9**  
 türkis/lila/hellgrün |  
 turchese/viola/verdino |  
 turquoise/purple/light green |  
 turquoise/violet/vert clair



**10**  
 weiß/hellgrau/dunkel |  
 bianco/grigio chiaro/scuro |  
 white/light gray/dark |  
 blanc/gris clair/foncé



**12**  
 weiß/schwarz | bianco/nero |  
 white/black | blanc/noir



**14**  
 ocker/lachs/braun |  
 oca/salmon/marrone |  
 ocher/salmon/brown |  
 ocre/saumon/brun



**19**  
 lila/nacht blaue/orange |  
 viola/blu notte/arancio |  
 purple/blue night/orange |  
 violet/bleu nuit/orange



**20**  
 lila/mittelblau/dunkelgrau |  
 viola/blu medio/grigio scuro |  
 purple/medium blue/dark gray |  
 violet/bleu moyen/gris foncé